

DESTA CONSORTIUM

well-being and prosperity

Tackling health inequalities
Providing quality social care
Empowering communities
Co-designing services
Building capacity

Shani Lee, Chief Executive
shani.lee@destaconsortium.org.uk





Hammersmith & Fulham

- mature voluntary sector – networks and representation
- relationships with PCT commissioners and LA officers
- Big Lottery BASIS:
5 year £500,000 grant

Timeline

| | |
|----------------------|--|
| Jun- Sept 2010 | Consultation and two-day workshop |
| Oct-Feb 2011 | Set up and incorporation |
| Jan-Mar 2011 | Pilot membership and expressions of interest |
| June 2011 | First contract won in open competition |

Desta will deliver social impact that would not otherwise be achieved, either by fragmented voluntary sector suppliers or by private sector competitors.

participation



resilience
and efficacy

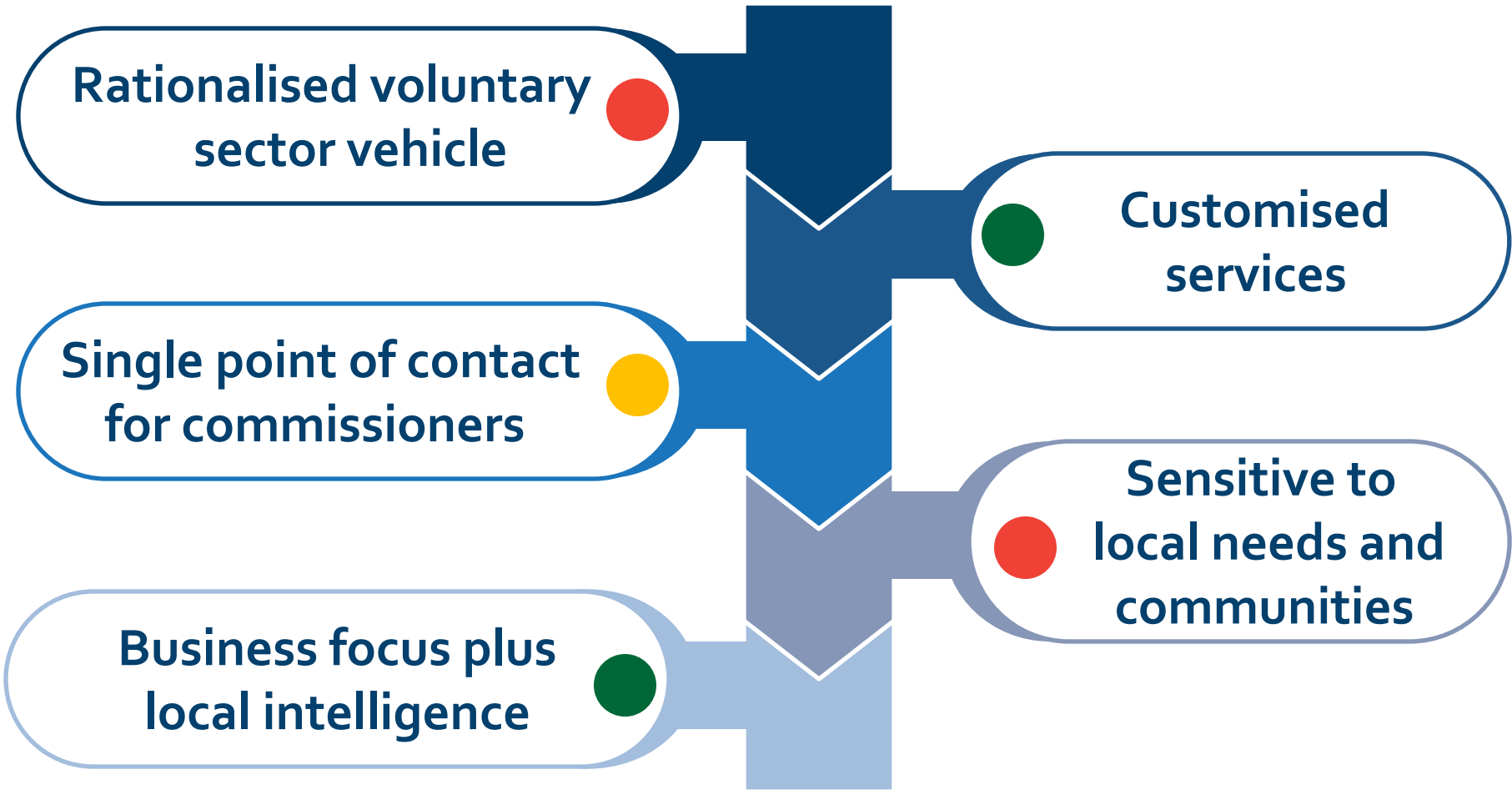


social and economic
engagement



Social Impact



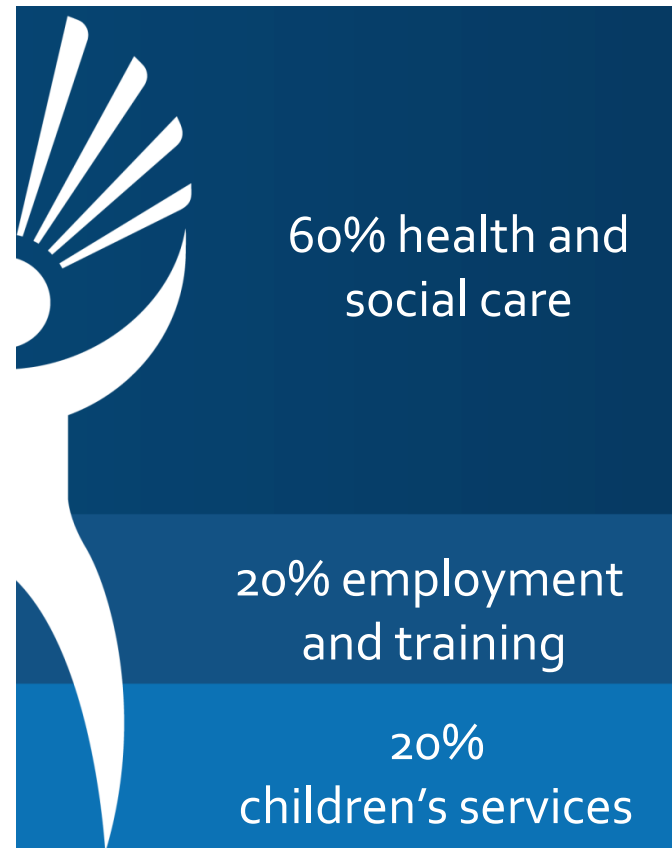


Infrastructure

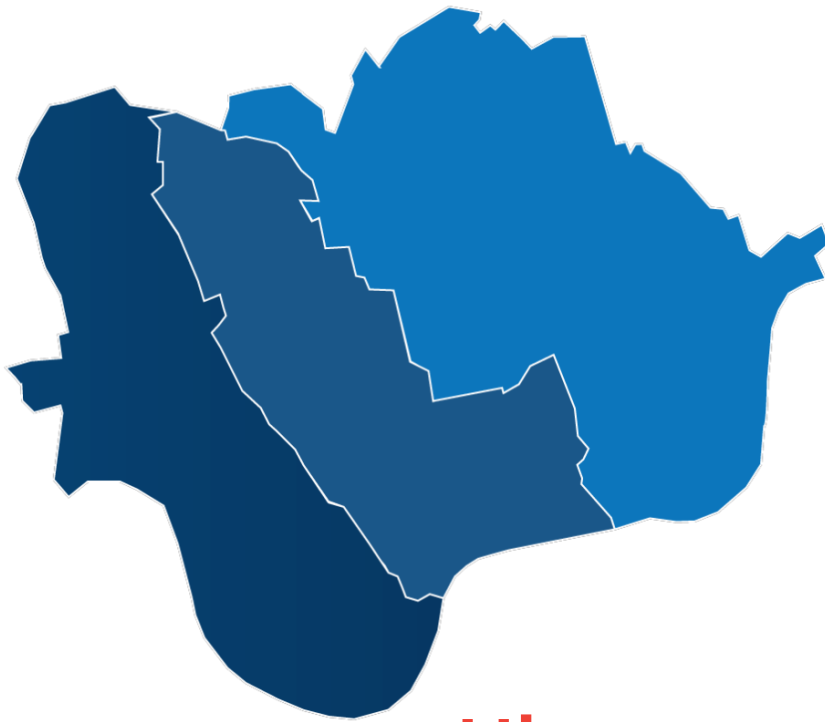
Internal economy

- 55 members, 17 waiting to join
- £60 million pa aggregated income
- 1,200 jobs and 650 casual jobs
- 2,300 volunteers – £4.9 million pa economic contribution

Members income



Current Position



Hiatus:

Tri-Borough re-structuring
and NHS transformation

10 year Investment & Growth Plan

- 20% share of Tri-Borough spend on public health, children and social care
- Local sector aligned and stable
- Generating wealth for re-investment

Priorities 2014-2015 Business Plan

- Retain core contracts and win one more
- Secure investment to sustain next two years
- Position Desta as a provider of scale in ESIF programme



Investment & Growth Strategy



Governance

- Formal consortium – independent legal entity
- Company limited by guarantee, registered charity

Conflicts of Interest and Benefits

- Articles of Association
- Membership Prospectus

Membership

- Formal, rigorous application process
- PQQ readiness – financial and good standing
- Service areas – experience, skills, performance

- Expert patients, health trainers, smoking cessation

- Sexual health and HIV prevention, diabetes/ community champions

- Service user groups, childhood obesity services

Behaviour change, self-management

Families with complex needs – social impact bond

- Health and social care integration, social and economic engagement,

- Personalisation, be-friending, isolation vs independence

Homecare Services

Supported Employment and Social Enterprise

- Counselling, befriending, mentoring/ peer support

- Substance misuse, employment and training, mental health

Types of Services

- **Risk assessment and risk management**
- **Classic private sector commercial consortium model**
- **Special Purpose Vehicle with Equity Holdings**

Investment

| | |
|---------|--|
| Time | Serious, long-term undertaking |
| Finance | £100,000 a year for 5 years not unreasonable |
| CVS | strategic partner, indispensable |

Procurement

Follow recommended time scales

Engagement

At Service Review and continuous

Challenges

Tackling health inequalities
Providing quality social care
Empowering communities
Co-designing services
Building capacity

Desta

Dawes Road Community Hub, 20 Dawes Road, London, SW6 7EN
Tel: 020 7952 1242 | Email: info@destaconsortium.org.uk

Publications

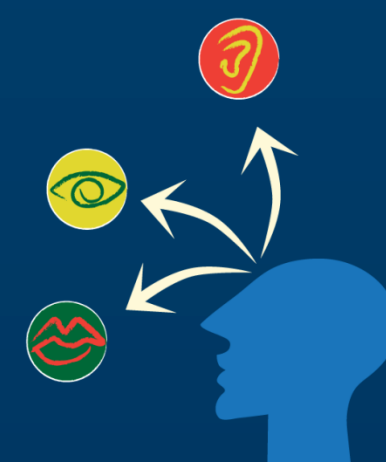
Membership Prospectus, Investment & Growth Strategy, Business Plan
Web: www.destaconsortium.org.uk

Neil Coulson Associates

Tel: 01246 417725
Email: neil.coulson123@btinternet.com

John Gillespie

Director, acevo Solutions
Regents Wharf, 8 All Saints Street, London, N1 9RL
Tel: 020 7014 4629 | Email: john.gillespie@acevo.org.uk
Web: www.consortiasupport.org.uk



Contacts

