



# What will I cover?

---

- CDF
- About Community First
- Evaluation of Community First
- Reflections on resilience
- Q&A

Community  
Development  
Foundation



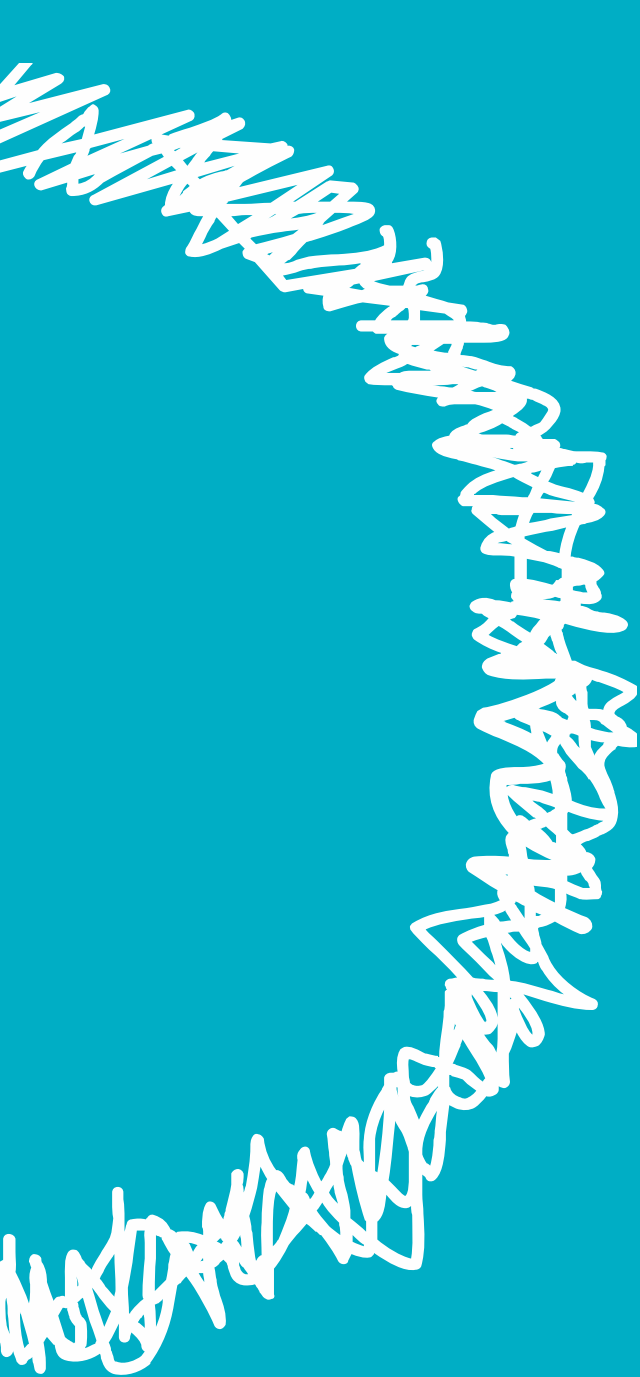
# Who are we?

---

**CDF is the leading national organisation in community development and engagement**

What does this mean?

- 50 years experience
- national grant administration
- community development projects
- research and evaluation
- campaigning, digital outreach to communities, training and consultancy



Community  
First

# Aims

- Encourage social action in neighbourhoods
- Support communities to make local changes
- Help communities identify their strengths
- Encourage people to give time, expertise and resources
- Introduce a new approach to funding



# What is the grant process?

---

- **£30M** in small grants
- Grants Between **£250** and **£2500**
- All grants must be **matched**



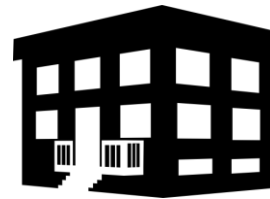
# What is the grant match?

---

**Can be matched with:**

**Cash** 

**In-kind contributions**



**Volunteer time**





# What does it look like?

---

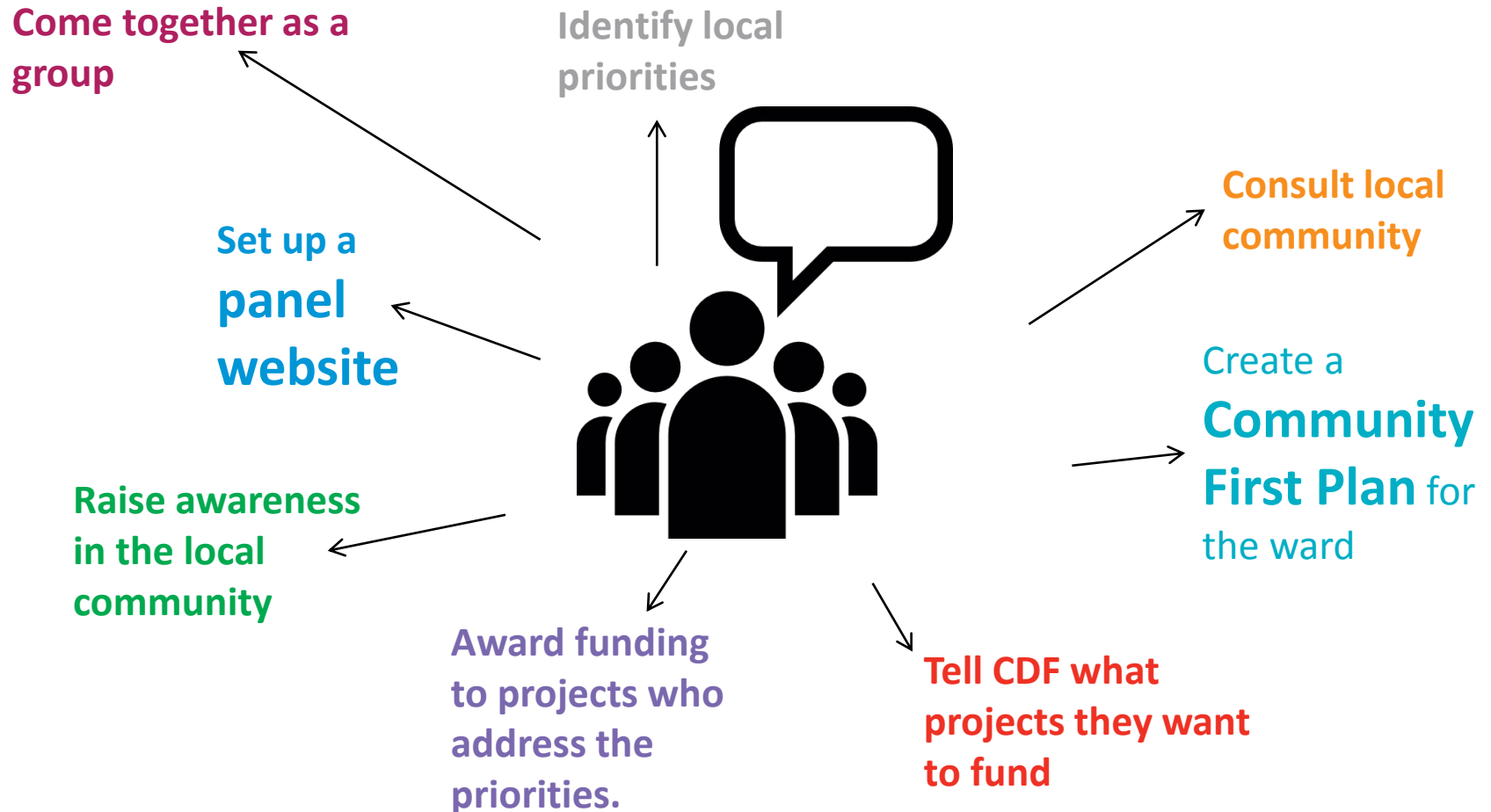
**593** Community First ward panels across England. Each panel is made up of local residents, between **4-8** members.

At least **one** panel for every LA in England

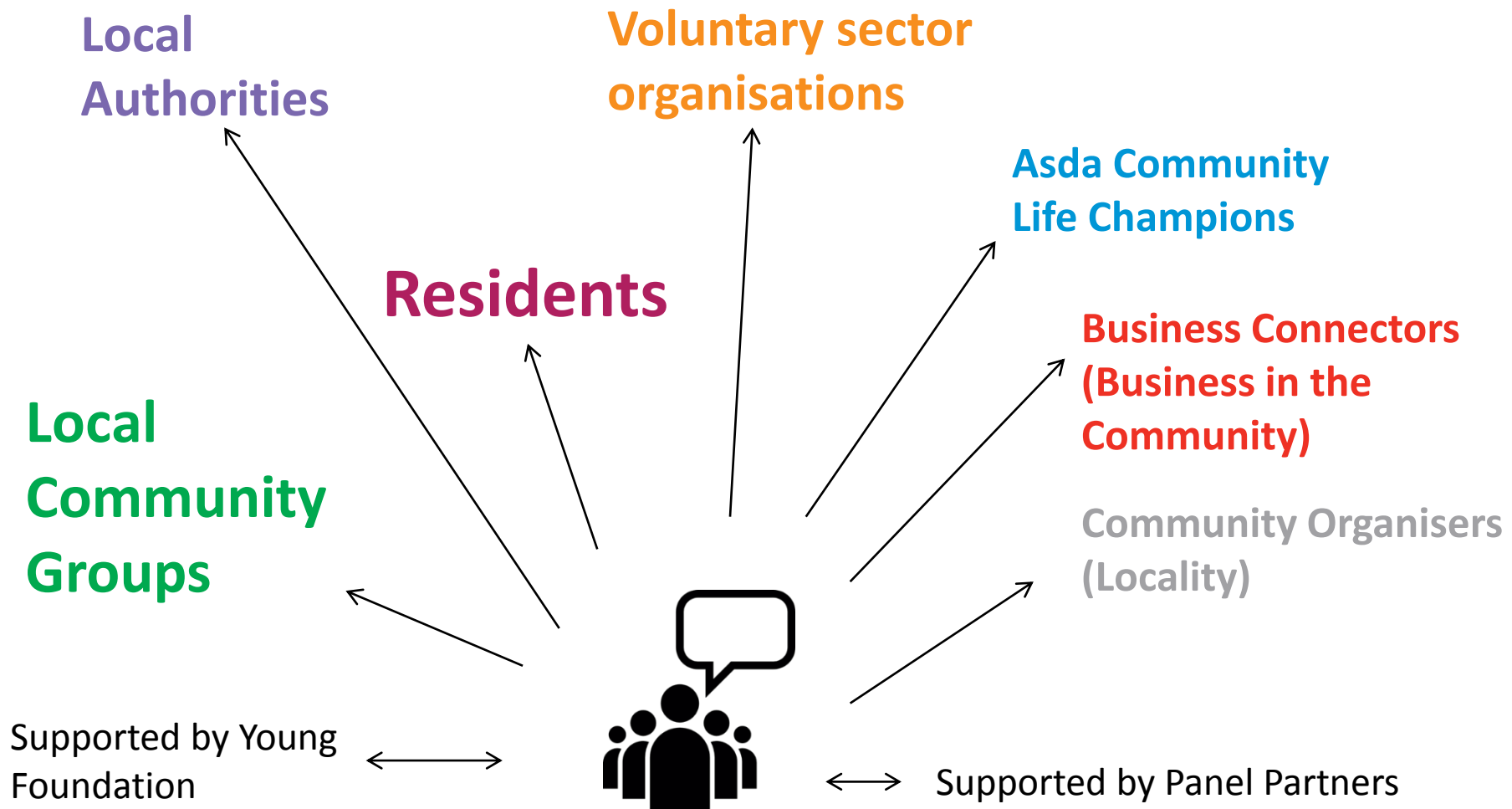
Programme is almost completely **online**

**380** different local voluntary sector 'Panel Partners' supporting the panels for free

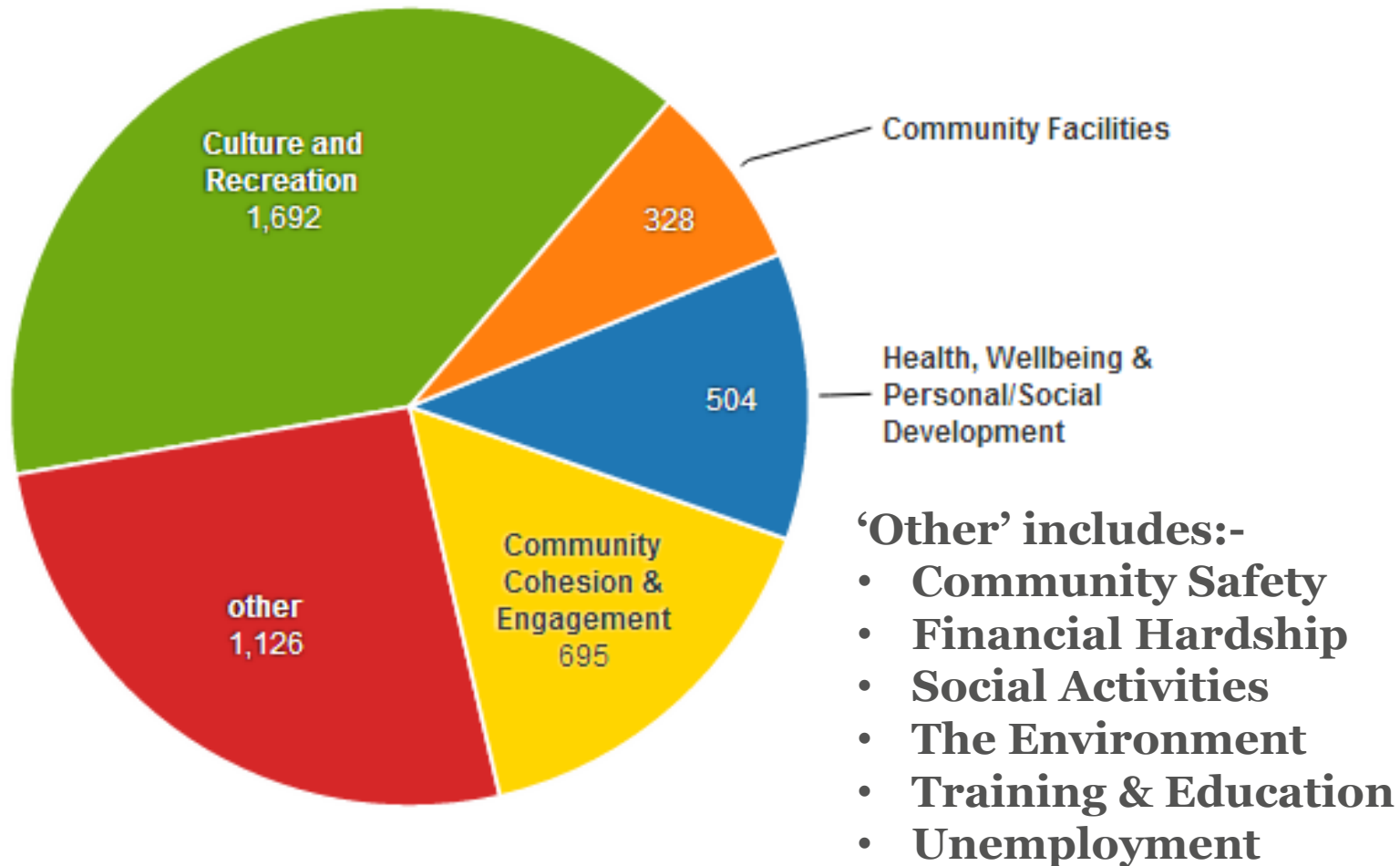
# What do the panels do?



# Who are the panels connecting with?



# What are the panels' priorities?



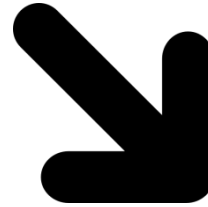


# It's a big programme!

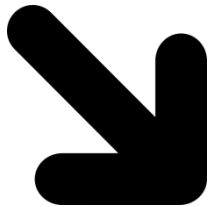
- **15,096** community projects funded to date
- Almost **£23m** in funding
- Average grant size is **£1,520**

# Bringing resources into communities

**£25m** of  
funding



has brought in



**£89.4m** worth of match

# The value of volunteers

---

All panels  
run by  
volunteers

**4.8m** volunteer  
hours on projects to date



Social action  
projects run by  
volunteers

**£53m** the value of  
volunteer match time

# What we've learnt

---

Panel Partners provide great support



Web and social media – successes  
and learning stories





# It's a big programme!

---

People wait for the deadlines!



Need to support these groups and volunteers so  
set up **Just Act.org.uk**.

Evaluation





# Evaluation

3/4 of projects say that without Community First funding their activity would have:

- Taken longer;
- Been on a smaller scale; or
- been of a lower standard

## New activity

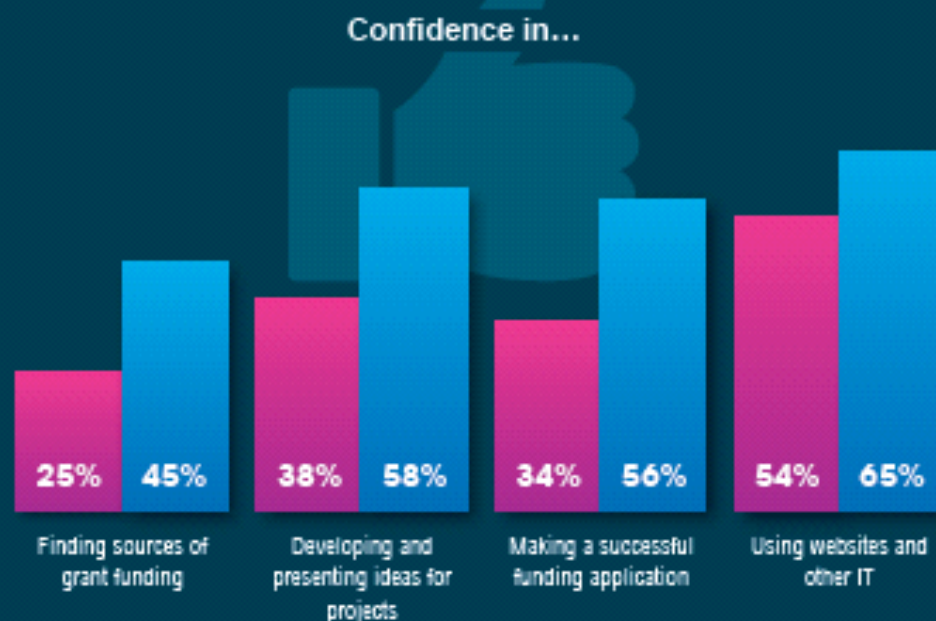
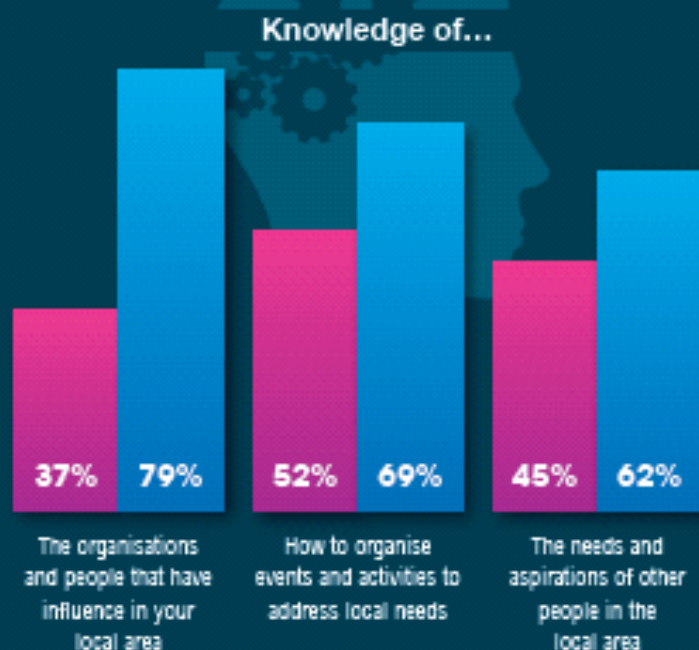
- 4/5 projects involved people who had not been involved in similar activities before
- 84% involved people running activities they had not run before
- 1/10 of the project organisations receiving Community First funding didn't exist prior to the programme

## The difference Community First is making...

Feedback from projects so far clearly shows the importance of the Community First funding in helping them carry out their activities. While it is too early in the evaluation to assess how much impact the Community First programme is having overall, there are **clear signs of the benefits to those involved**. For example, across a number of key aspects, **project members' knowledge and skills have increased** since the start of the Community First programme.

Projects answering between 8 and 10 on a scale of 0 to 10

Before  
After





# Evaluation

## % of projects saying each aspect is more common in their local area since **Community First** began



# Projects are working to...



63%

Connect people together



56%

Encourage people to volunteer



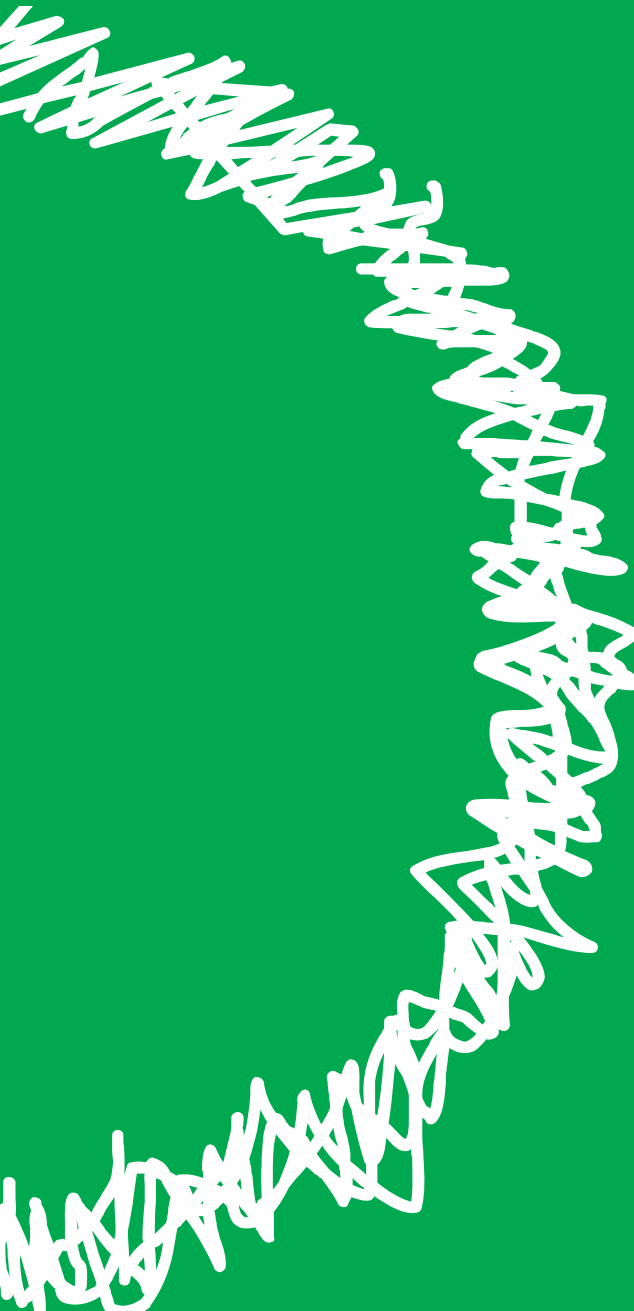
52%

Encourage people to be active and healthy



46%

Help people to learn



# Reflections on resilience



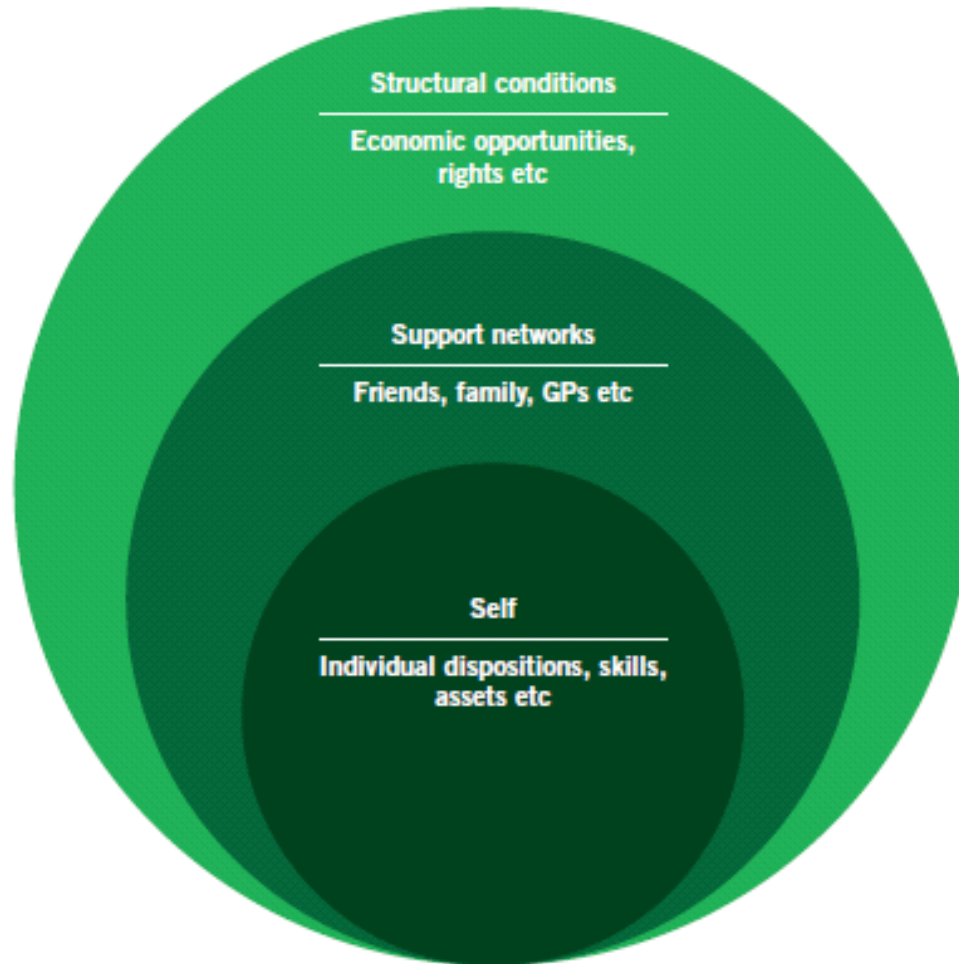
# Community resilience

- Economic development
- Social capital
- Information and Communication
- Community Competence

Norris et al (2008)



# People's ability to meet needs



[The Young Foundation \(2012\)](#)  
[Adapting to change: the role of community resilience](#)

# Community resources





# Community First - resilience

- Connecting people and groups
- Improving population wellness
- Attracting resources
- Empowering residents
- Devolving decision making
- Building capacity



For further information  
please contact:

Alison Seabrooke

[Alison.seabrooke@cdf.org.uk](mailto:Alison.seabrooke@cdf.org.uk)

or visit

[www.cdf.org.uk](http://www.cdf.org.uk)