

Structural Funds in London 2014-20

Alex Conway

European Programmes Director

European Programmes Management Unit

Greater London Authority



€6.2billion available across England



London allocated €748.6m (c.£641m)

split between

European Social Fund

for jobs & training

+ Inner London to receive £37m Youth Employment Initiative

European Regional Development Fund
for SME support and eco-growth


Plus match funding = c.£1.35bn

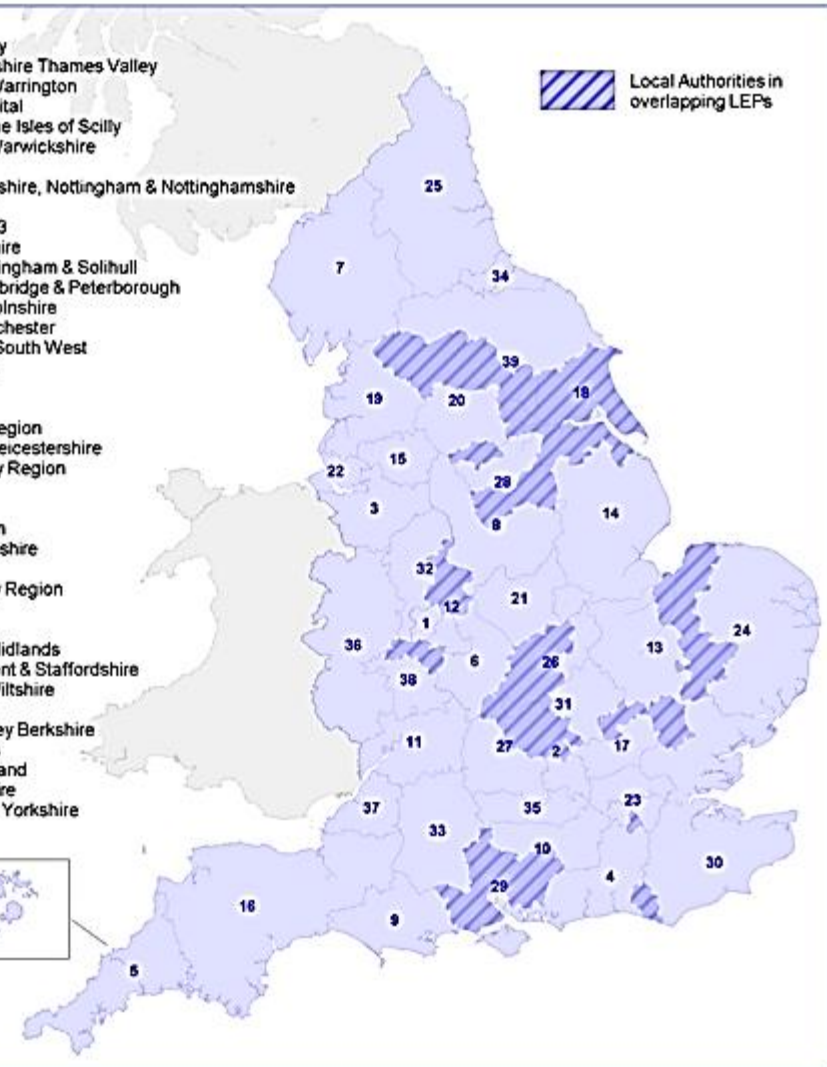
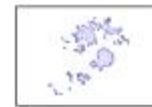
The role of Local Enterprise Partnerships



BIS | Department for Business Innovation & Skills | Local Enterprise Partnerships

1. Black Country
2. Buckinghamshire Thames Valley
3. Cheshire & Warrington
4. Coast to Capital
5. Cornwall & the Isles of Scilly
6. Coventry & Warwickshire
7. Cumbria
8. Derby, Derbyshire, Nottingham & Nottinghamshire
9. Dorset
10. Enterprise M3
11. Gloucestershire
12. Greater Birmingham & Solihull
13. Greater Cambridge & Peterborough
14. Greater Lincolnshire
15. Greater Manchester
16. Heart of the South West
17. Hertfordshire
18. Humber
19. Lancashire
20. Leeds City Region
21. Leicester & Leicestershire
22. Liverpool City Region
23. London
24. New Anglia
25. North Eastern
26. Northamptonshire
27. Oxfordshire
28. Sheffield City Region
29. Solent
30. South East
31. South East Midlands
32. Stoke-on-Trent & Staffordshire
33. Swindon & Wiltshire
34. Tees Valley
35. Thames Valley Berkshire
36. The Marches
37. West of England
38. Worcestershire
39. York & North Yorkshire

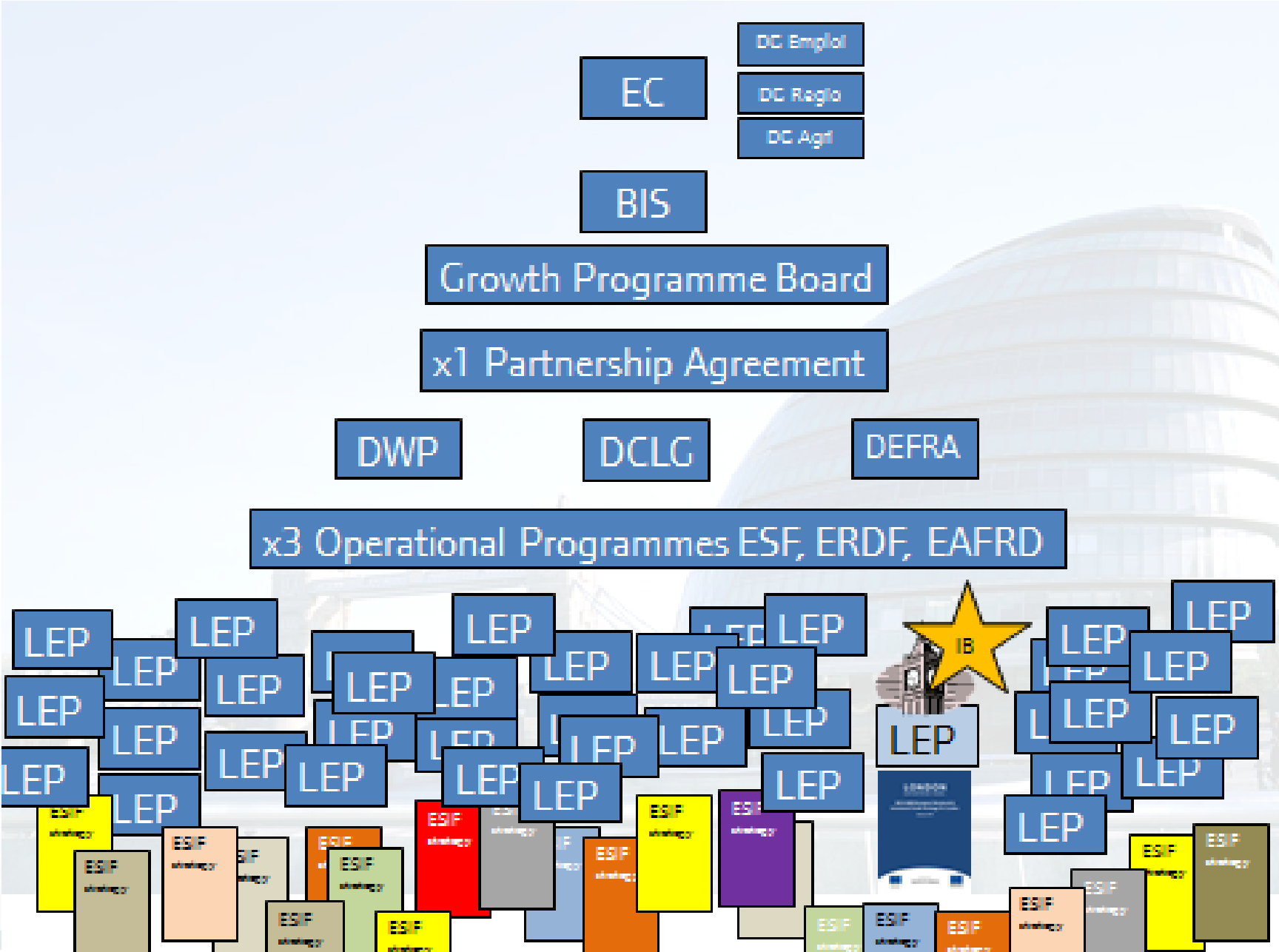
 Local Authorities in overlapping LEPs



Produced by Statistical Analysis Directorate

Contains Ordnance Survey data © Crown copyright and database right 2012

Department for Business, Innovation and Skills



ESIF 2014-20 Skills and Employment Priority

1. Freedoms, flexibilities and funding incentives

- a) Targeted employability programmes for the long-term unemployed/ disadvantaged workless groups to access sustainable job opportunities;
- b) Tailored support for young people aged 15-24 not in education, employment or training (EET) or at risk of NEET;
- c) Career progression and progression in learning particularly for the low paid/ low skilled;
- d) Progression onto higher level and advanced skills training including higher level apprenticeships.

ESIF 2014-20 Skills and Employment

2. Informed Customers

a) Promoting a much stronger London-wide and locally driven careers offer through:

- Bringing together schools, FE, HE and employers to ensure training meets London's current and future skills needs;
- Improving information on post 16 career pathways;
- Brokering progression opportunities and jobs mapping.

ESIF 2014-20 Skills & Employment

3. Employer Engagement

- a) Business support for SMEs to take on apprentices, provide good quality work placements & employment opps;
- b) Promote opportunities leading to entrepreneurship, business start-up and self-employment through skills development;
- c) Sector-specific business focused skills programmes aimed at equipping SMEs, micro business and sole traders with the skills they need to grow their business.

ESF Results 2014-20

Outcomes:

- Participants in employment on leaving;
- Inactive participants engaged in job searching upon leaving;
- Participants in education/training upon leaving;
- Participants gaining a qualification upon leaving; and
- 26 weeks sustained education, employment and training (LEP)
- LEPs yet to receive targets for their area

Delivery Arrangements

Co-financing approach through Opt-in Organisations:

- Opt-in organisations (OIO): Skills Funding Agency, Department for Work and Pensions, Big Lottery Fund (national), plus London Councils and Greater London Authority (local).
- LEP sets priorities for investment and coordinates activities across the OIOs
- OIOs responsible for procurement and contracting and provision of match funding (report back to LEP & Managing Authority)
- Projects delivered by cross sector partnerships with right mix of skills & expertise
- Direct bidding approaches may also be used in future

Timeline

Date	Milestone
Spring 2014	Govt' s initial approval of London ESIF
Spring – Autumn 2014	Develop priorities and Opt-in activities for initial years
Dec 2014 (Estimated)	Govt & EC agree OP
Early 2015 (post OP approval)	Programme launch

Contacts

- www.london.gov.uk/lep
- Email: esf@london.gov.uk